

ERC111 Smart Dimmer / 112 Smart Switch and EU1254 Kinetic Switch Datasheet

DESCRIPTION:

ERC111 Smart Dimmer / 112 Smart Switch have Tuya WiFi module inside and are able to be remotely controlled by the Kinetic Switch (EU1254) and Kinetic Switch APP through a 2.4GHz WiFi network. The communication frequency between the Kinetic Switch and Smart Switch is 902MHz.



EU1254 Kinetic Switch

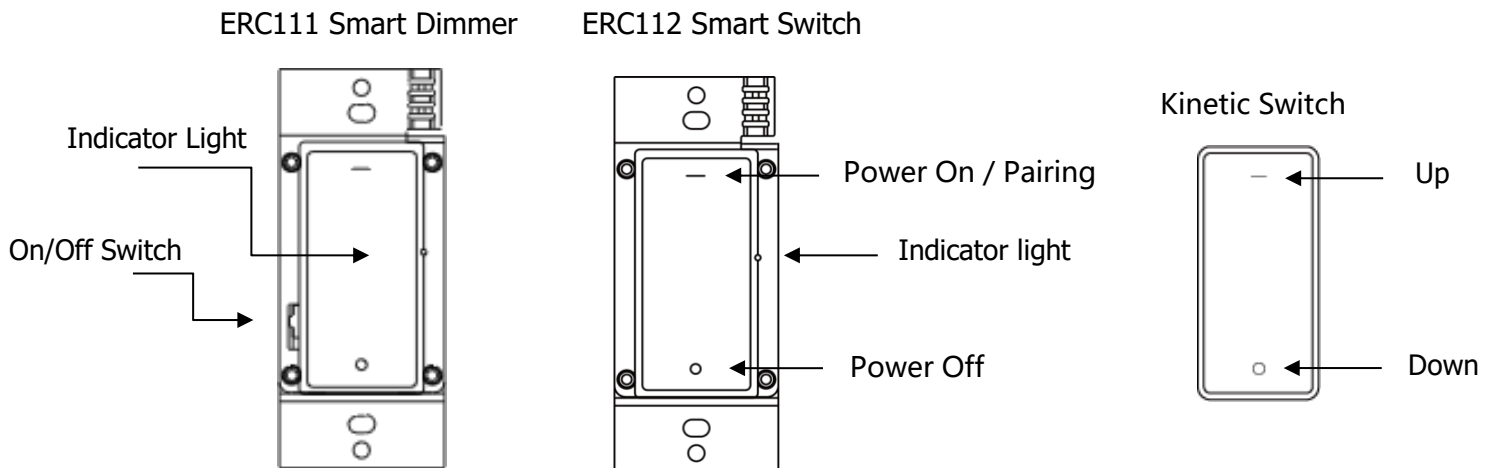
ERC111 Smart Dimmer / ERC112 Smart Switch

Connecting to 2.4GHz WiFi gateway

The Smart Dimmer / Switch will enter network connecting mode after first power-up as default setting. Then, add Smart Dimmer/Switch device in Kinetic switch APP.

In case the password or gateway is later changed, it is required to reconfigure the network. If the controller fails to enter network connecting mode, reset the unit manually by pressing and holding the function button for 10 seconds. The indicator light will turn steady On after slow flash. Release the button, and the indicator light will start fast-flashing after 3 seconds. Now, the controller is on network connecting mode.

Pairing Method of Smart Dimmer/Switch with Kinetic switch

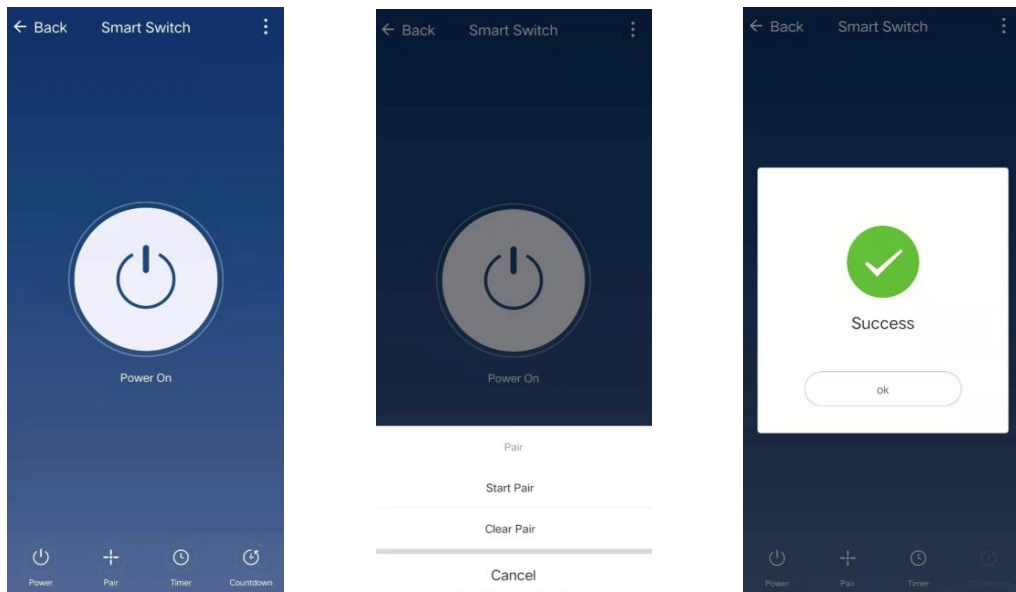


1> By Smart Dimmer Switch

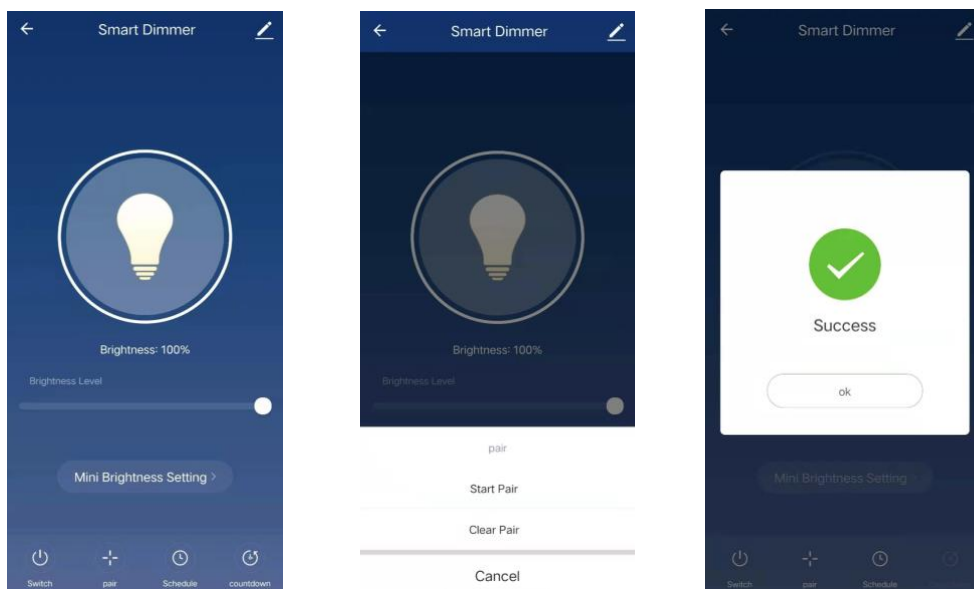
Keep pressing the pairing button on Smart Dimmer / Switch for 6 seconds and the indicator light will start to flash. Then release the button to enter pairing mode. Press the Kinetic Switch and the indicator light of the Smart Switch will turn off, indicating that pairing is successful.

After the pairing, UP button is for power-On. Down button is for power-Off.

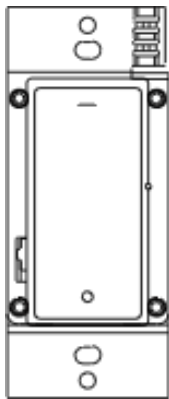
2>By APP – Smart Switch: Select the Smart Switch in APP, click the Pair->Start Pair, then press the Kinetic Switch button to complete the pairing.



2>By APP – Smart Dimmer: Select the Smart Dimmer in APP, click the Pair->Start Pair, then press the Kinetic Switch button to complete the pairing.



Control Method for ERC 111 Smart Dimmer



1. Turn on light by short press

2. Long press to Brighten light

1. Turn off light by short press

2. Long press to Dim light

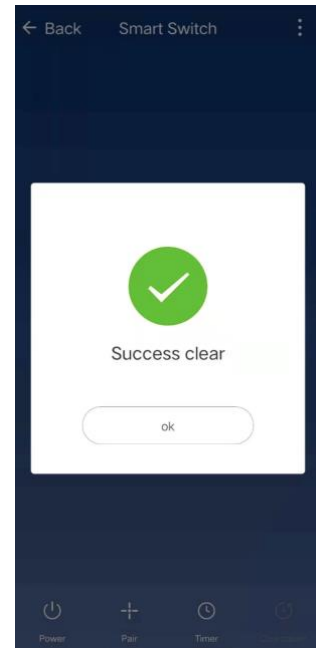
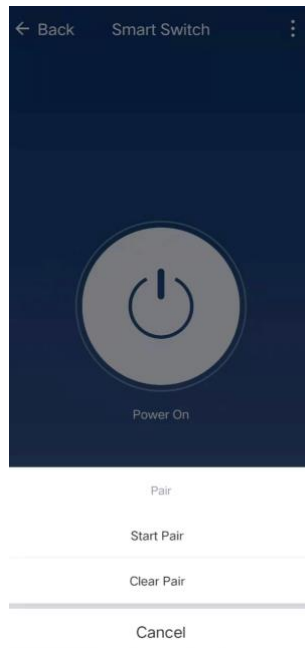
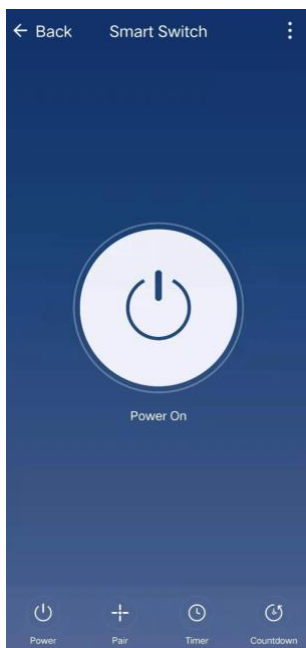
Clear Pairing of Smart Dimmer/Switch with Kinetic Switch

1>By Smart Dimmer / Switch

Keep pressing the pairing button for 12 seconds until the indicator light changes from blinking to a steady light and then goes out.

2> By APP

Select the smart dimmer/switch in APP, click the Pair ->Clear Pair in the left bottom and select the dimmer/switch you want to clear in the following interface.



Note: Pairing of Multiple Units up to 10

One ERC111 / ERC112 could pair and be controlled by up to 10 EU1254

One EU1254 could pair and control up to 10 ERC111 / ERC112

SMART SPEAKER CONTROL

This controller is compatible with Amazon Echo voice control

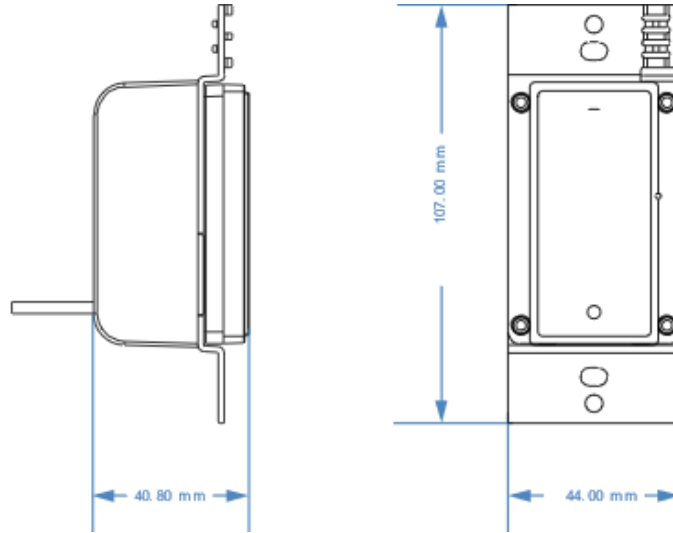
SPECIFICATIONS

MODEL ERC111	
Rated Voltage	AC100-120V 50/60Hz
Power mode	Live Neutral line power supply
Rated power	LED / CFL 200W ; Incandescent 300W
Communication mode	2.4GHz WIFI & RF 902MHz
Work range	100 feet
Pairing quantity	10 units max
Dimensions	L44mm*W41mm*H107mm
Sensitivity	-110dBm
Work temperature	-15°C ~ +45°C / +5°F~+113°F

MODEL ERC112	
Rated Voltage	AC100-240V 50/60Hz
Power mode	Live Neutral line power supply
Rated power	LED / CFL 250W ; Incandescent 500W
Communication mode	2.4GHz WIFI & RF 902MHz
Work range	100 feet
Pairing quantity	10 units max
Dimensions	L44mm*W41mm*H107mm
Sensitivity	-110dBm
Work temperature	-15°C ~ +45°C / +5°F~+113°F

DIMENSIONS

Smart Dimmer ERC111 / Smart Switch ERC112



Kinetic Switch EU1254

Kinetic Switch Magnetic Tray

